



engineers of  
ATLANTA SCIENCE FESTIVAL™

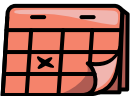
Science ATL brings people together through the wonder of science.

# HOW YOU CAN MAKE AN IMPACT



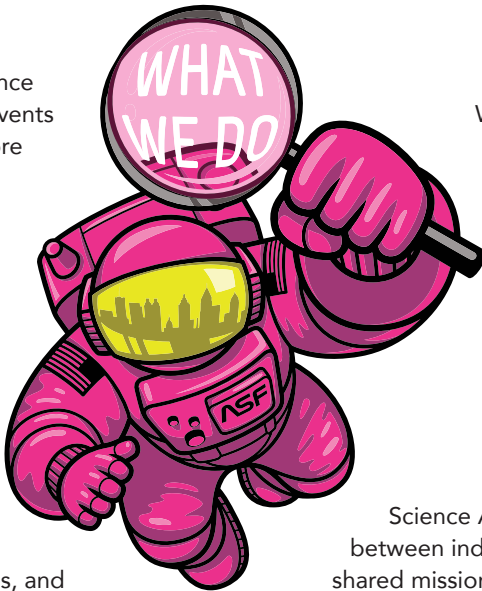
## ATLANTA SCIENCE FESTIVAL

This two-week festival celebrates local science and technology, featuring more than 100 events throughout metro Atlanta and reaching more than 60K children and adults each year. Festival events feature 100+ partner organizations culminating in the free explosive Exploration Expo, Atlanta's biggest interactive science event.



## YEAR-ROUND ACTIVITIES

Through the Science Scene, our online event calendar, we connect residents to local science events, workshops, and meetups. Additionally, Science ATL produces regular events including tours, short-courses, art collaborations, partner pop-ups, and one of our marquee events the 5K Race Through Space: where runners race their way through a scale layout of the solar system.



## LEADERSHIP TRAINING



Science Communication Fellowships and Workshops help researchers and academics effectively present their findings to the public, while our Chief Science Officers Program prepares middle and high school students for STEM leadership roles, empowering them to make change in their communities.

## COMMUNITY BUILDING

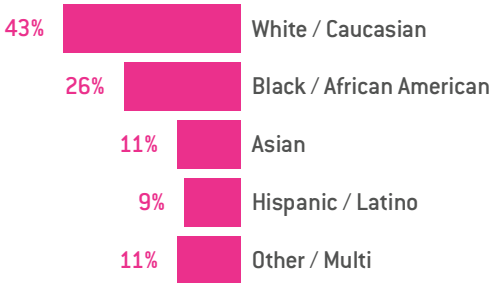


Science ATL strengthens and develops partnerships between individuals and organizations in Atlanta with a shared mission of creating out-of-school science learning opportunities. We have created connections between community members, sparked relationships with new partners, helped partners reach new audiences, and shined a spotlight on the incredible work that our partners are doing here in Atlanta.

## SCIENCE ATL BY THE NUMBERS\*

# 60K REACHED

### Race / Ethnicity



### Gender



\*2019 data

*"In my 27 years of being in business, this is the single most important thing I've ever done. It's also the most enjoyable thing I've ever done. Being able to shine the light on science is going to draw people, companies, and investment to the metro Atlanta region."*

David Hartnett

Chief Economic Development Officer, Metro Atlanta Chamber

# WHY SUPPORT SCIENCE ATL?

## ACCESS

Science ATL broadens access to science learning opportunities for all, emphasizing inclusion and reducing barriers to equitable participation.

## ENGAGE

Science ATL offers opportunities for employees to mentor youth and engage with community members to share their passion for STEM careers.

## REACH

Each year, Science ATL reaches more than 60K people in person, 30K through social media, and more than 80M through other channels.

## CONNECT

Science ATL collaborates with more than 150 science, cultural, and educational institutions to strengthen the STEAM ecosystem in Atlanta.

# 2020 SPONSOR BENEFITS

Sponsoring Science ATL is an opportunity to create a community of lifelong learners who value the role science plays in improving our daily lives. Together, we can connect community members with learning experiences, broaden and strengthen partnerships across educational, cultural and industry sectors, and prepare the next generation of STEM leaders.

	<b>Pt</b> Platinum SPONSOR \$100,000	<b>Au</b> Gold SPONSOR \$50,000	<b>Ag</b> Silver SPONSOR \$25,000	<b>Cu</b> Copper SPONSOR \$10,000	<b>Kr</b> Krypton SPONSOR \$5,000
Ad in Atlanta Science Festival (ASF) Booklet	Full	Half			
Logo on ASF Feather Flag	●	●	●		
Logo in ASF Sponsor Sign & Print Collateral	●	●	●	●	●
ASF Expo Exhibit Space	Custom	Custom	20 x 20'	10 x 20'	10 x 10'
Logo on our Website with Link	Premium	●	●	●	Name Only
Shout-out on Newsletter / Social	Feature, Logo, Mention	Feature, Logo, Mention	Logo, Mention	Logo	Logo
Event Recognition	All	All	All	Event Specific	Event Specific

SPONSOR ANY OF  
OUR INITIATIVES!

*Pledges must be confirmed in writing by December 1, 2019; sponsors confirming after this date may not be eligible for all benefits. Benefits subject to change. Additional benefits may be mutually agreed upon. If desired, sponsors may choose to allocate support to a specific program or event. Contact Jordan Rose for information: [jordan@scienceatl.org](mailto:jordan@scienceatl.org), 770-322-4992*

THANK YOU TO OUR TOP SPONSORS



THE ARTHUR M. BLANK  
FAMILY FOUNDATION



FOUNDATION